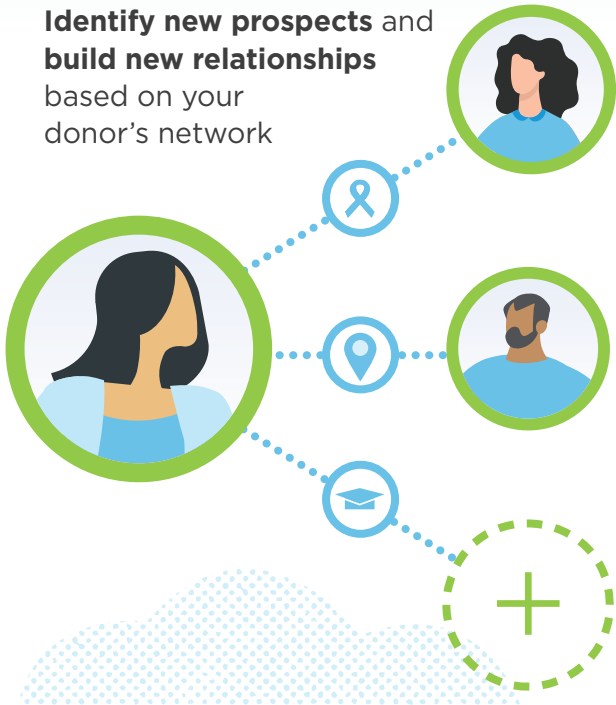


iWave Connections

Drive More Donations with Relationship Intelligence

Identify new prospects and build new relationships based on your donor's network



Discover high-profile prospects who are connected to your donors

Find corporate or nonprofit board members who are connected to your donors or prospects. These individuals likely have a strong giving capacity and may share a linkage to your cause.

Discover your donor's neighbors

Find the perfect candidates that can support a local fundraising event by accessing a list of individuals who live in close proximity to your donors. Plus, you can use these insights to ask your donors for introductions and referrals.

Add custom connections

Do you have additional relationship intelligence that you would like to add to your donor's profile? Simply add custom records to your connections to keep your profiles up-to-date.



Generate a new prospect pool with every screening project

Every time you use iWave Screening, you can uncover high-profile prospects who are connected to your donor to build a new prospect pool. Plus, you gain insights into which prospects you should prioritize and how they can be cultivated.

How it Works



Corporate or Nonprofit Board Connections

Our matching algorithm connects to multiple external data sources to find relationship intelligence about your corporate and nonprofit board colleagues.



Neighbor Connections

Our matching algorithm connects to real estate data sources to identify your donor's personal connections based on where they live.

Are you ready to fuel your fundraising with active intelligence?

[REQUEST A DEMO](#)